

# South Island Masters Regatta 2022



Hi, times, details and some Health & Safety for next weekend...

We will be at the Red Bridge Henley approx. 9:30am on Saturday morning to set up for the Long Distance race.

There will be a safety briefing at 11:30am for everyone.

Boat launching will start at Noon. The race will start when all boats are at the starting area.

The river is tidal, but NO – we have not coordinated the start time to coincide with an incoming tide

It is approx. a 45 – 50 minute drive to the river from Dunedin.

The Google Map Coordinates are -45.992554, 170.149952 for those people who have not been to Henley before.

(If you check the map, don't let Mr Google confuse you – we are racing on the Taieri River not the Waipori River – the name changes at the confluence of the two rivers!)

After the race, there will be a BBQ, refreshments and presentation of Trophy's at the Henley Community Centre Hall - 1218 Centre Road, - Map Coordinates -45.96839, 170.15866

Boat trailers can be left in the boat park at Lake Waihola on Saturday night. We will have some bods staying overnight at the boat park for security.

On Sunday, there will be a safety briefing at 8:30am for the regatta.

## **Parking at the River.**

The area downstream of the bridge is reserved for trailer parking only. As space is limited at the river, we will have marshals to direct trailer parking. *If clubs are sharing a trailer, can you please let us know so we can plan the parking 😊*

Cars can be parked on the roadside, upstream side of the bridge.

Attached is an overview of the parking and launching areas.

## **Health & Safety**

Just a few points on H&S: (mostly common sense)

- The weather sometimes gets a bit cool in the sunny south. We aren't planning it to be cold – but come prepared. For the Long Distance, there may be some waiting time before all the boats get to the start – it will pay to have some warm clothes to put on while waiting.
- Parking at the river is on public roads – be aware of other traffic.
- Either going to the Henley Hall or Lake Waihola from the river, you will need to cross State Highway 1 – be alert, allow ample time to cross the Highway – particularly if towing a trailer.
- Review the info on the Long Distance – this covers the hazards in the race and how to pass and be passed - remember “the boat being overtaken must give way, and should, if necessary, give the necessary calls to allow the overtaking boat to pass them smoothly without losing time.”

Link to document: <http://rowit.nz/download/simm2022-information.pdf>

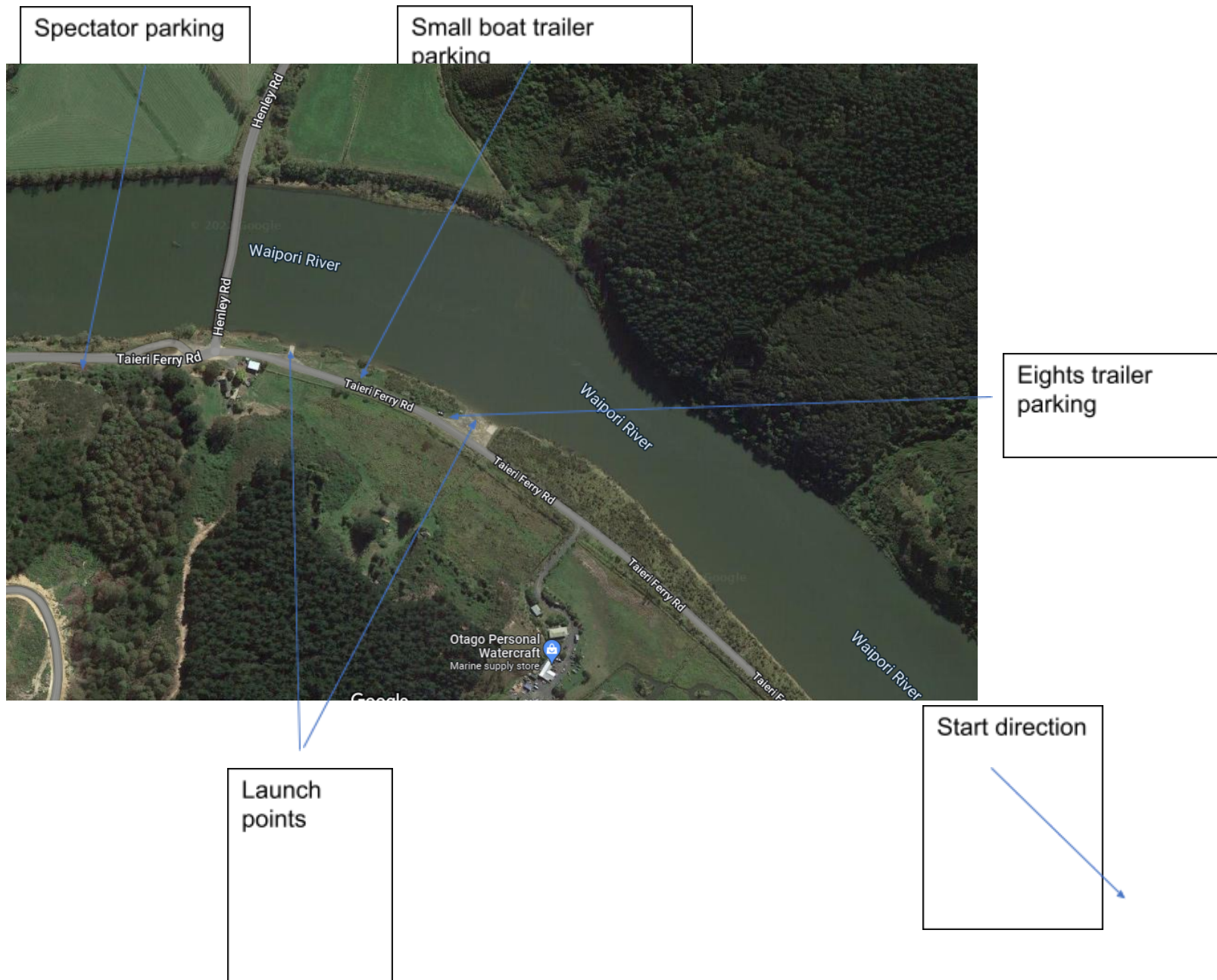
- There will be an ambulance and EMT at both events for any medical emergencies, they will be stationed close to the Boat Launch Area.
- Attached is a plan of the Lake Waihola course. Familiarise yourself with the flow pattern

Cheers, See you on the 4th – safe travels.

Dean Winton – Regatta Controller

Any queries about the above – my cell: 021 577-025  
email: [president@otagorowingclub.org.nz](mailto:president@otagorowingclub.org.nz)

## Long Distance – Parking & Launch Areas



# LAKE WAIHOLA - 1000 metre ROWING COURSE

